



Anecdotes on Access in Montana

What are the statistics about access in Montana? Who determines access? Is this just about hunting and fishing?



1.52 Million Acres of public land is inaccessible in Montana – mostly BLM, then USFS

1.2 Million acres of state land is inaccessible according in FWP



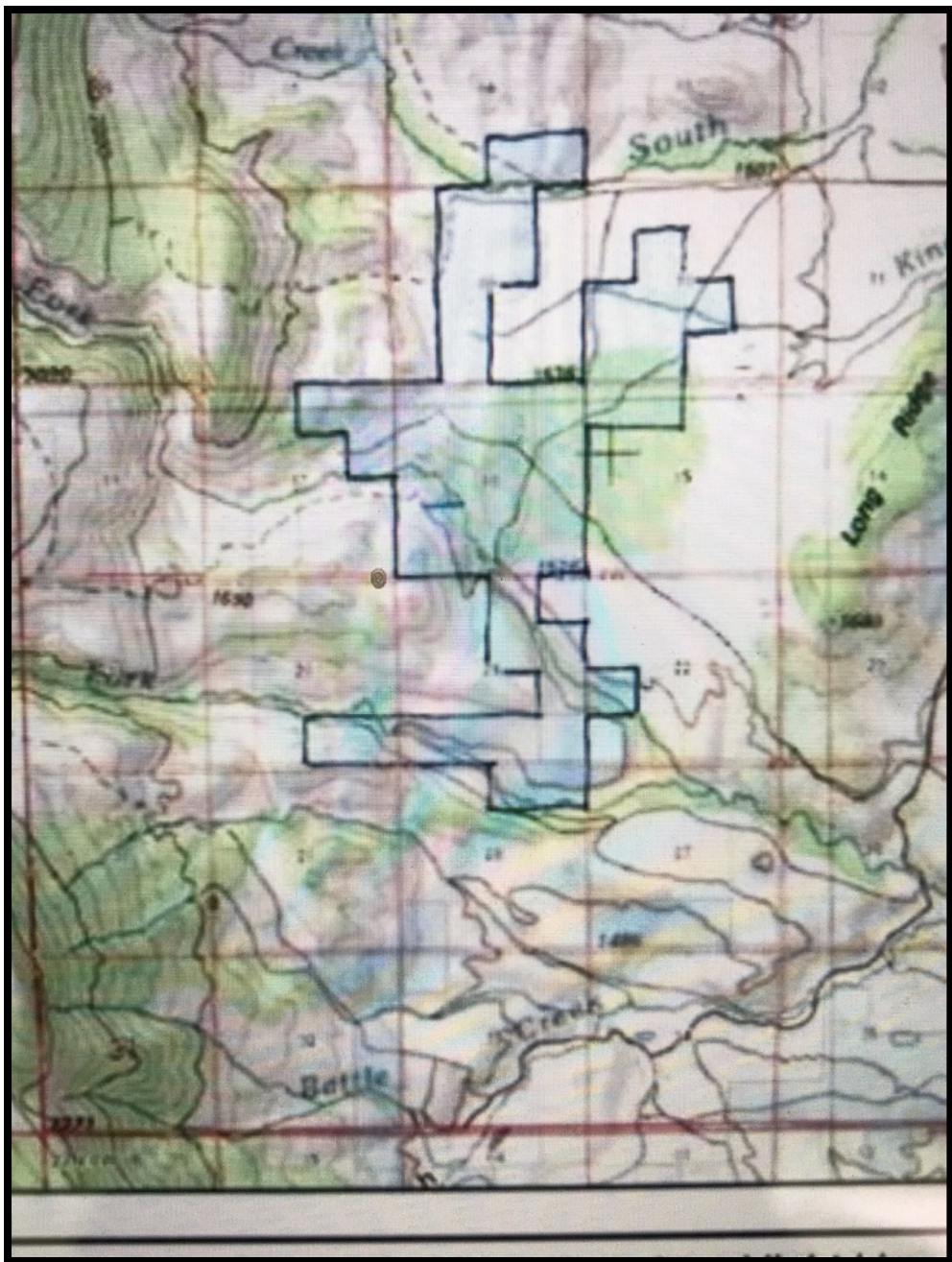
Why do people block access? Why do people want access?

Private property, often people new to Montana – not always! It's not just about hunting and fishing anymore..... Trail running, pack rafting, skiing, dog walking, family camping. As hunting licenses decrease, recreational use increases – SCORP 2014



Salmond Road Saga

- Began in the 1930's
- County Commission attention 2000
- State and user attention 2005
- Lawsuit PWLA
- Opened 2015





Falls Creek Access Along Rocky Mountain Front

- Violent conflict since subdivision in 1970
- Killing in 2013
- Access to Southern Bob and Scapegoat
- RMEF effort to buy 400 acres for \$2.5M

Blue paint used on state trust land accomplishes the same purpose as orange paint on private land - to notify persons against unauthorized use (trespass). Recreational use of legally accessible state trust land, whether or not it is posted with blue paint, is an authorized use so long as the recreationist has in his or her possession a state land recreational use license or conservation license.

DO I HAVE TO HAVE THE LESSEE'S PERMISSION OR HAVE TO NOTIFY THE LESSEE PRIOR TO USING THE STATE TRUST LAND?

A lessee may require notification (not permission) either in person, by telephone, or by drop box, from recreationists prior to their entry onto leased or licensed state land. The type of notification required depends on the type of recreational activity being conducted and the type of notification requested.

If notification is required, the state land must be posted at customary access points with signs available from DNRC. The posting must include the name, phone number, and directions to the residence of the person to be notified, or the location of the drop box.

GENERAL NOTIFICATION GUIDELINES

Overnight use, horseback use, or firearm use NOT IN CONJUNCTION with licensed hunting requires personal or drop box notification at the designated notice location.

Overnight use in conjunction with floating requires personal notification if the designated notice location is less than 500 yards from the state land access point. If greater than 500 yards, drop box notification is sufficient.

All other Uses, including overnight horse use or firearms IN CONJUNCTION with licensed hunting require personal notification only if the distance from the state tract to the designated notice location or nearest public telephone is less than 5 road miles. If the lessee Cannot be contacted, or if the distance is greater than 5 miles, a drop box must be provided at customary access points to the tract.

If personal notification is required, the lessee must be available from 7:00 a.m. to 9:00 p.m. to receive such notification. The recreationist must, if requested, provide his or her name, address, recreational license number and the names of the members of the party.

Proper notification entitles the recreationist(s) to engage in general recreational activities for three consecutive days, or a longer period if authorized by the lessee, without re-notification.

WHO IS ENFORCING THE RULES, AND WHAT IS THE PENALTY FOR ILLEGAL RECREATIONAL USE OF THE LANDS?

DFWP game wardens are primarily responsible for enforcement of the state land recreational use rules. However, DNRC trust land personnel and other state and local law enforcement personnel may also be involved in enforcing

OR ANSWERS TO OTHER QUESTIONS THAT HAVE:

Informational pamphlets and copies of the rules are available from all DNRC offices. Additionally, informational pamphlets are available from DFWP offices and license agents, as well as many Bureau of Land Management and U.S. Forest Service offices. If you have further questions, please contact your local DNRC office or phone (406)-444-2074. Also visit the web at www.dnrc.mt.gov/trust/REMB/statues/recreationaluse.asp

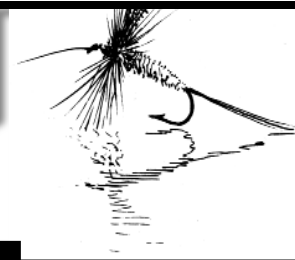
REPORT VIOLATIONS

Contact a Montana Department of Fish, Wildlife & Parks game warden or call 1-(800) TIP-MONT.

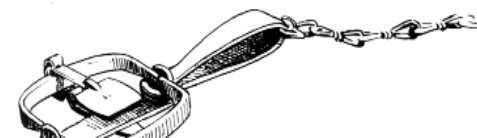
FOR MORE INFORMATION REGARDING STATE LANDS

DNRC LAND OFFICES	
DNRC HEADQUARTERS 1625 11th Avenue Helena, MT 59620 (406) 444-2074	FORESTRY DIVISION 2705 Spurgin Road Missoula, MT 59801 (406) 542-4300
Central Land Office 8001 North Montana Avenue Helena, MT 59602 (406) 458-3500	Eastern Land Office 321 Main Street Miles City, MT 59301 (406) 232-2034
Northeastern Land Office 613 Northeast Main Street Lewistown, MT 59457 (406) 538-7789	Northwestern Land Office 655 Timberwolf Parkway, Ste 1 Kalispell, MT 59901 (406) 751-2240
Southern Land Office Airport Industrial Park Billings, MT 59105 (406) 247-4400	Southwestern Land Office 1401 27th Avenue Missoula, MT 59804 (406) 542-4200
DNRC UNIT OFFICES area code (406)	
Anaconda Unit 563-6078 Bozeman Unit 586-5243 Clearwater Unit 244-5857 Conrad Unit 278-7869 Dillon Unit 683-6305 Glasgow Unit 228-2430 Hamilton Unit 363-1585 Havre Unit 265-5236	Helena Unit 458-3512 Kalispell Unit 751-2241 Lewistown Unit 538-7789 Libby Unit 293-2711 Lincoln Station 362-4999 Missoula Unit 542-4201 Plains Unit 826-3851 Stillwater Unit 881-2371 Swan River Unit 754-2301

5,000 copies of this public document were published at an estimated cost of \$0.04 per copy, for a total cost of \$200.00, which includes \$200.00 for printing and \$0.00 for distribution.



Guide to Recreational Use of Montana's State Trust Lands





The great bison hunt
2005