

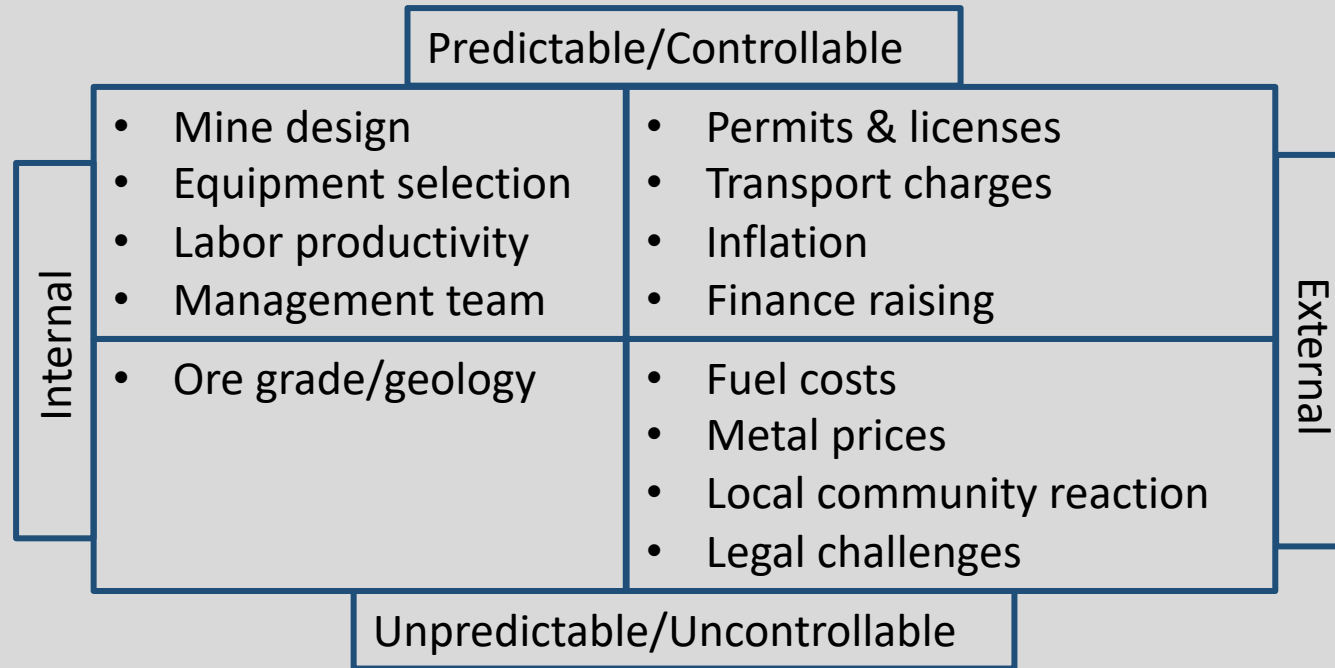
Strategies to Improve U.S. Critical Mineral and Metal Development: The Greater Phoenix Project Analog

Public Lands Foundation Annual Meeting
September 12, 2019

Presented by
Annie Huhta, Director
Mackay School of Earth Sciences & Engineering
College of Science
University of Nevada, Reno



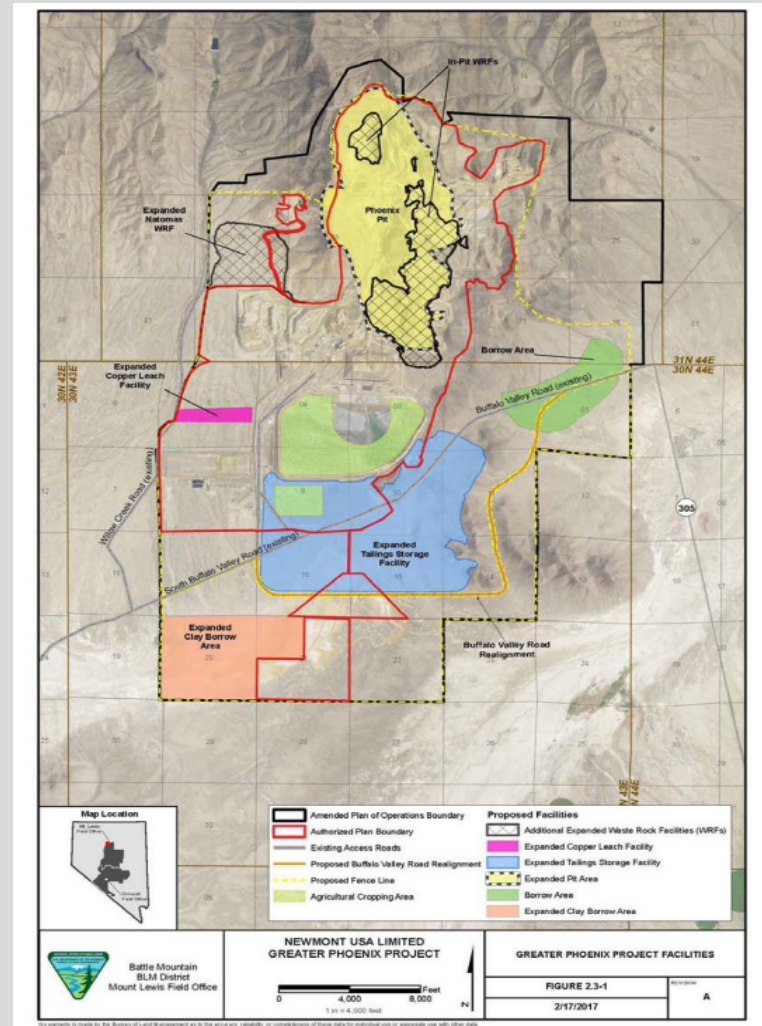
Internal and External Factors Affecting Mining Investments



SNL Metals & Mining



Greater Phoenix Proposed Facilities



https://eplanning.blm.gov/epl-front-office/projects/nepa/59989/153150/187670/20180726_GreaterPhoenix_FEIS_VolumeIII_508_b.pdf



Strategies to Improve U.S. Critical Mineral and Metal Development: The Greater Phoenix Project Analog

Questions?

